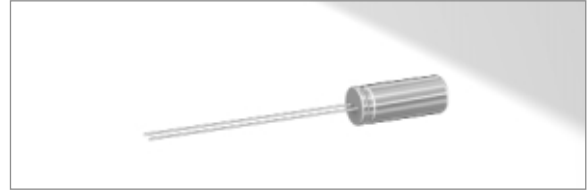


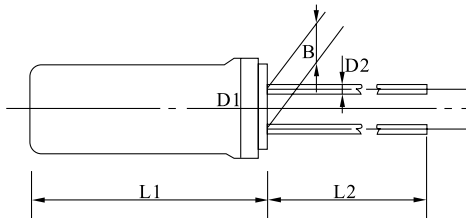
## Quartz Crystal DT38/DT26



### Parameters

Item	Type	DT38	DT26
Frequency Range		32.768KHZ/40KHZ/75/KHZ/76.8KHZ	32.768KHZ/40KHZ/75/KHZ/76.8KHZ
Frequency Tolerance		GRADE A 10ppm GRADE B 20ppm	GRADE A 10ppm GRADE B 20ppm
Load Capacitance		12.5pF(Typ.)	
Measurement Drive Level		1.0 0.2m W	
Series Resistance		30kΩ max	30kΩ max
Q-Factor		80,000(Typ.) 50,000min	70,000(Typ.) 40,000min
Turnover Temperature		25°C 5°C	25°C 5°C
Parabolic Curvature Constant		-0.036 0.006ppm/°C	
Shunt Capacitance		1.3pF (Typ.) 2.0pF max	1.1pF (Typ.) 1.8pF max
Capacitance Ratio		530 (Typ.) 650 max	470 (Typ.) 650 max
Operating Temp. Range		-10 ~ +60°C	
Storage Temp. Range		-20 ~ +70°C	
Shock Resistance		3ppm max Natural Drop 3 Times on Hard Wooden Board	
Insulation Resistance		500MΩ min/DC100V	

### Dimensions (mm)



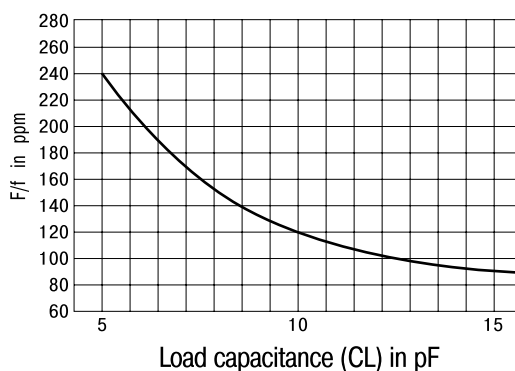
	L1	L2	D1	D2	B
DT26 (∅ 2x6)	6.2	6.0	∅ 2.1	∅ 0.2	0.7
DT38 (∅ 3x8)	8.3	10.0	∅ 3.1	∅ 0.3	0.8

### Part Number Guide

e.g. FTX32.768K 12.5pF D6 (\*D6 = DT26 D8 = DT38)

FT	Quartz crystal resonator	Frequency(32.768KHz)	Load Capacitance	Package Type
FT	X	32.786K	12.5	D6

### Frequency Deviation VS. Load Capacitance (Typical)



### Temperature Characteristics (Typical)

