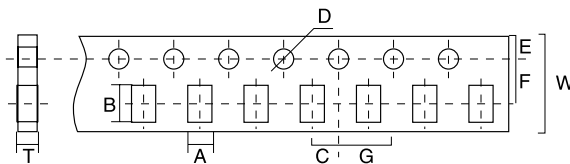


## Packing of Chip, Chip Array & Network

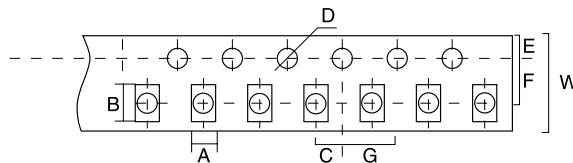
### Dimension of Paper Taping (mm)

| Type | A±0.2 | B±0.2 | C±0.05 | ∅D <sup>+0.1</sup><br>-0 | E±0.1 | F±0.05 | G±0.1 | W±0.2 | T±0.1 |
|------|-------|-------|--------|--------------------------|-------|--------|-------|-------|-------|
| 0402 | 0.65  | 1.15  | 2.0    | 1.5                      | 1.75  | 3.5    | 4.0   | 8.0   | 0.45  |
| 0603 | 1.10  | 1.90  | 2.0    | 1.5                      | 1.75  | 3.5    | 4.0   | 8.0   | 0.67  |
| 0805 | 0.65  | 2.40  | 2.0    | 1.5                      | 1.75  | 3.5    | 4.0   | 8.0   | 0.81  |
| 1206 | 2.00  | 3.60  | 2.0    | 1.5                      | 1.75  | 3.5    | 4.0   | 8.0   | 0.81  |
| 1210 | 2.80  | 3.50  | 2.0    | 1.5                      | 1.75  | 3.5    | 4.0   | 8.0   | 0.75  |
| 08P4 | 2.00  | 3.60  | 2.0    | 1.5                      | 1.75  | 3.5    | 4.0   | 8.0   | 0.83  |
| 10P8 | 2.00  | 3.60  | 2.0    | 1.5                      | 1.75  | 3.5    | 4.0   | 8.0   | 0.85  |

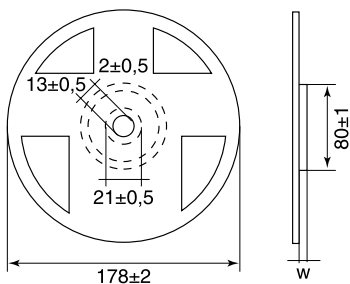


### Dimension of Embossed Taping (mm)

| Type | A±0.2 | B±0.2 | C±0.05 | ∅D <sup>+0.1</sup><br>-0 | ∅D <sub>1</sub> <sup>+0.25</sup><br>-0 | E±0.1 | F±0.05 | G±0.1 | W±0.2 | T±0.1 |
|------|-------|-------|--------|--------------------------|--|-------|--------|-------|-------|-------|
| 1210 | 2.90  | 5.6   | 2.0    | 1.5                      | 1.5                                    | 1.75  | 5.5    | 4.0   | 12    | 1.0   |
| 2512 | 3.5   | 6.7   | 2.0    | 1.5                      | 1.5                                    | 1.75  | 5.5    | 4.0   | 12    | 1.0   |
| 16P8 | 1.8   | 4.4   | 2.0    | 1.5                      | 1.5                                    | 1.75  | 5.5    | 4.0   | 12    | 1.0   |

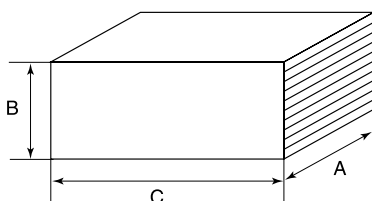


### Dimension of Reel (mm)



| Type | Taping   | Qty./Reel | Tape Width | W±1  |
|------|----------|-----------|------------|------|
| 0402 | Paper    | 10,000pcs | 8 mm       | 10   |
| 0603 | Paper    | 5,000pcs  | 8 mm       | 10   |
| 0805 | Paper    | 5,000pcs  | 8 mm       | 10   |
| 1206 | Paper    | 5,000pcs  | 8 mm       | 10   |
| 1210 | Paper    | 5,000pcs  | 8 mm       | 10   |
| 2010 | Embossed | 4,000pcs  | 12 mm      | 13.8 |
| 2512 | Embossed | 4,000pcs  | 12 mm      | 13.8 |
| 08P4 | Paper    | 5,000pcs  | 8 mm       | 10   |
| 10P8 | Paper    | 5,000pcs  | 8 mm       | 10   |
| 16P8 | Embossed | 4,000pcs  | 12 mm      | 13.8 |

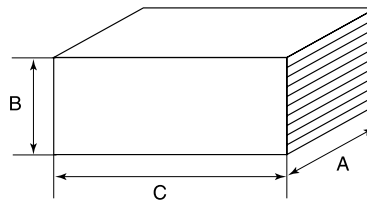
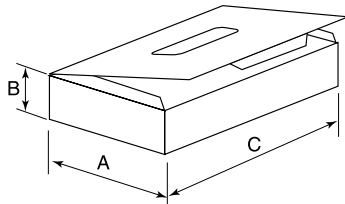
### Dimension of Bulk Cassette (mm)



36(B) x 12(A) x 110(C)

## Standard Packing of Coated Type Resistors

### Bulk in Box Packing:

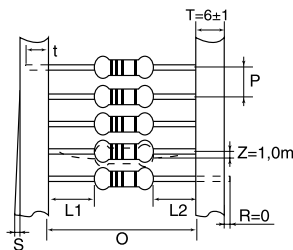
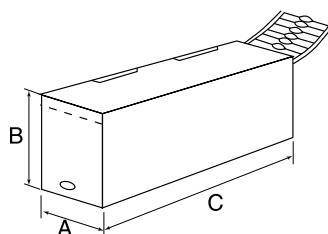


Box of Plastic Case

| Part No.                                | Type       | Dimension of Box (mm) |     |     | Qty. Of Bag/Box |
|---|------------|-----------------------|-----|-----|-----------------|
|   |            | A±5                   | B±5 | C±5 |                 |
| <b>Carbon Film Fixed Resistors</b>      |            |                       |     |     |                 |
| CFROW8                                  | CFR-12     | 55                    | 55  | 155 | 1,000/5,000     |
| CFROS4                                  | CFR-25-S   | 55                    | 55  | 155 | 1,000/5,000     |
| CFROW4                                  | CFR-25     | 75                    | 35  | 150 | 500/1,000       |
| CFROU2                                  | CFR-50-SS  | 75                    | 35  | 150 | 250/1,000       |
| CFROS2                                  | CFR-50-S   | 75                    | 35  | 150 | 250/1,000       |
| CFROW2                                  | CFR-50     | 75                    | 65  | 150 | 200/1,000       |
| CFR01S                                  | CFR-100-S  | 75                    | 65  | 150 | 100/500         |
| CFR01W                                  | CFR-100    | 95                    | 55  | 155 | 100/400         |
| CFR02S                                  | CFR-200-S  | 95                    | 55  | 155 | 100/400         |
| CFR02W                                  | CFR-200    | 95                    | 55  | 155 | 100/300         |
| CFR03S                                  | CFR-300-S  | 95                    | 55  | 155 | 100/300         |
| <b>Metal Film Fixed Resistors</b>       |            |                       |     |     |                 |
| MFLOW8                                  | MF-12      | 55                    | 55  | 155 | 1,000/5,000     |
| MFROS4                                  | MF-25-S    | 55                    | 55  | 155 | 1,000/5,000     |
| MFLOW4                                  | MF-25      | 75                    | 35  | 150 | 500/1,000       |
| MFR004                                  | MF-40-SS   | 75                    | 55  | 155 | 1,000/5,000     |
| MFR0U2                                  | MF-50-SS   | 75                    | 35  | 150 | 250/1,000       |
| MFROS2                                  | MF-50-S    | 75                    | 35  | 150 | 500/1,000       |
| MFLOW2                                  | MF-50      | 75                    | 65  | 150 | 200/1,000       |
| MFR006                                  | MF-60-S    | 75                    | 35  | 150 | 250/1,000       |
| MFR01W                                  | MF-100     | 75                    | 65  | 150 | 100/500         |
| MFR02W                                  | MF-200     | 95                    | 55  | 155 | 100/400         |
| MFR03W                                  | MF-300     | 95                    | 55  | 155 | 100/300         |
| <b>Metal Oxide Film Fixed Resistors</b> |            |                       |     |     |                 |
| MOROW4                                  | MOR-25     | 75                    | 35  | 150 | 250/1,000       |
| MOROS2                                  | MOR-50-S   | 75                    | 35  | 150 | 250/1,000       |
| MOROW2                                  | MOR-50     | 75                    | 65  | 150 | 200/1,000       |
| MOR01S                                  | MOR-100-S  | 95                    | 55  | 155 | 100/1,000       |
| MOR01W                                  | MOR-100    | 95                    | 55  | 155 | 500/1,000       |
| MOR02S                                  | MOR-200-S  | 95                    | 55  | 155 | 500/1,000       |
| MOR02W                                  | MOR-200    | 95                    | 55  | 155 | 100/400         |
| MOR03S                                  | MOR-300-S  | 95                    | 55  | 155 | 100/400         |
| MOR03W                                  | MOR-300    | 95                    | 55  | 155 | 100/300         |
| MOR05U                                  | MOR-500-SS | 95                    | 55  | 155 | 100/300         |
| **MOR05S                                | MOR-500-S  | 185                   | 95  | 365 | 1,000           |
| **MOR05W                                | MOR-500    | 185                   | 95  | 365 | 1,000           |
| MOR07W                                  | MOR-700    | 170                   | 110 | 200 | 25/400          |

## Standard Packing of Coated Type Resistors

### Tape in Box Packing

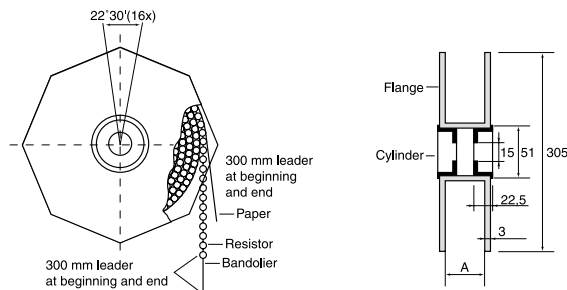


\*L1-L2=1.0 Max  
(0 For Jumper Wire)  
\*\*S=0,5 Max.  
(0.8 Max for PT-26)

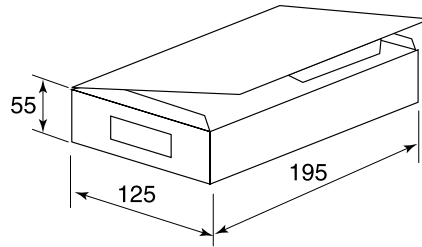
| Part No.                                | Type       | Dimension of T/B (mm) |        |     |     |     | Qty /Box |
|---|------------|-----------------------|--------|-----|-----|-----|----------|
|   |            | O                     | P      | A±5 | B±5 | C±5 |          |
| <b>Carbon Film Fixed Resistors</b>      |            |                       |        |     |     |     |          |
| CFROW8                                  | CFR-12     | 52±1                  | 5±0.3  | 75  | 65  | 260 | 5,000    |
| CFROS4                                  | CFR-25-S   | 52±1                  | 5±0.3  | 75  | 65  | 260 | 5,000    |
| CFROW4                                  | CFR-25     | 52±1                  | 5±0.3  | 75  | 90  | 250 | 5,000    |
| CFROU2                                  | CFR-50-SS  | 52±1                  | 5±0.3  | 70  | 115 | 255 | 5,000    |
| CFROS2                                  | CFR-50-S   | 52±1                  | 5±0.3  | 70  | 60  | 255 | 2,000    |
| CFROW2                                  | CFR-50     | 52±1                  | 5±0.3  | 75  | 80  | 255 | 2,000    |
| CFR01S                                  | CFR-100-S  | 52±1                  | 5±0.3  | 75  | 80  | 255 | 1,000    |
| CFR01W                                  | CFR-100    | 58±1                  | 10±0.5 | 85  | 85  | 255 | 1,000    |
| CFR02S                                  | CFR-200-S  | 65±5                  | 10±0.5 | 85  | 85  | 255 | 1,000    |
| CFR02W                                  | CFR-200    | 65±5                  | 10±0.5 | 90  | 65  | 255 | 500      |
| CFR03S                                  | CFR-300-S  | 65±5                  | 10±0.5 | 90  | 65  | 255 | 500      |
| <b>Metal Film Fixed Resistors</b>       |            |                       |        |     |     |     |          |
| MFR0W8                                  | MF-12      | 52±1                  | 5±0.3  | 75  | 65  | 260 | 5,000    |
| MFR0S4                                  | MF-25-S    | 52±1                  | 5±0.3  | 75  | 65  | 260 | 5,000    |
| MFR0W4                                  | MF-25      | 52±1                  | 5±0.3  | 75  | 90  | 250 | 5,000    |
| MFR004                                  | MF-40-SS   | 52±1                  | 5±0.3  | 75  | 65  | 260 | 5,000    |
| MFR0U2                                  | MF-50-SS   | 52±1                  | 5±0.3  | 70  | 115 | 255 | 5,000    |
| MFR0S2                                  | MF-50-S    | 52±1                  | 5±0.3  | 70  | 60  | 255 | 2,000    |
| MFR0W2                                  | MF-50      | 52±1                  | 5±0.3  | 75  | 80  | 255 | 2,000    |
| MFR006                                  | MF-60-S    | 52±1                  | 5±0.3  | 70  | 115 | 255 | 5,000    |
| MFR01W                                  | MF-100     | 58±1                  | 5±0.3  | 75  | 80  | 255 | 1,000    |
| MFR02W                                  | MF-200     | 65±5                  | 10±0.5 | 85  | 85  | 255 | 1,000    |
| MFR03W                                  | MF-300     | 65±5                  | 10±0.5 | 90  | 65  | 255 | 500      |
| <b>Metal Oxide Film Fixed Resistors</b> |            |                       |        |     |     |     |          |
| MOR0W4                                  | MOR-25     | 52±1                  | 5±0.3  | 70  | 115 | 255 | 5,000    |
| MOR0S2                                  | MOR-50-S   | 52±1                  | 5±0.3  | 70  | 115 | 255 | 5,000    |
| MOR0W2                                  | MOR-50     | 52±1                  | 5±0.3  | 85  | 120 | 255 | 2,000    |
| MOR01S                                  | MOR-100-S  | 58±1                  | 5±0.3  | 85  | 120 | 255 | 2,000    |
| MOR01W                                  | MOR-100    | 58±1                  | 5±0.3  | 75  | 80  | 255 | 1,000    |
| MOR02S                                  | MOR-200-S  | 58±1                  | 5±0.3  | 75  | 80  | 255 | 1,000    |
| MOR02W                                  | MOR-200    | 65±5                  | 10±0.5 | 90  | 90  | 255 | 1,000    |
| MOR03S                                  | MOR-300-S  | 65±5                  | 10±0.5 | 90  | 90  | 255 | 1,000    |
| MOR03W                                  | MOR-300    | 65±5                  | 10±0.5 | 80  | 75  | 260 | 500      |
| MOR05U                                  | MOR-500-SS | 65±5                  | 10±0.5 | 80  | 75  | 260 | 500      |
| MOR05S                                  | MOR-500-S  | 90±5                  | 10±0.5 | 110 | 120 | 500 | 500      |

## Standard Packing of Coated Type Resistors

### Tape in Reel Packing



| Part No.                                | Type       | Dimension of Reel (mm) |     |     |     | Qty /Box |
|---|------------|------------------------|-----|-----|-----|----------|
|   |            | A                      | W   | H   | L   |          |
| <b>Carbon Film Fixed Resistors</b>      |            |                        |     |     |     |          |
| CFR0W8                                  | CFR-12     | 73±2                   | 85  | 305 | 290 | 5,000    |
| CFR0S4                                  | CFR-25-S   | 73±2                   | 85  | 305 | 290 | 5,000    |
| CFR0W4                                  | CFR-25     | 73±2                   | 85  | 305 | 290 | 5,000    |
| CFR0U2                                  | CFR-50-SS  | 73±2                   | 85  | 305 | 290 | 5,000    |
| CFR0S2                                  | CFR-50-S   | 73±2                   | 85  | 305 | 290 | 4,000    |
| CFR0W2                                  | CFR-50     | 73±2                   | 85  | 305 | 290 | 2,500    |
| CFR01S                                  | CFR-100-S  | 73±2                   | 85  | 305 | 290 | 2,500    |
| CFR01W                                  | CFR-100    | 80±5                   | 95  | 295 | 290 | 1,000    |
| CFR02S                                  | CFR-200-S  | 80±5                   | 95  | 295 | 290 | 1,000    |
| CFR02W                                  | CFR-200    | 80±5                   | 105 | 300 | 290 | 1,000    |
| CFR03S                                  | CFR-300-S  | 80±5                   | 105 | 300 | 290 | 1,000    |
| <b>Metal Film Fixed Resistors</b>       |            |                        |     |     |     |          |
| MFR0W8                                  | MF-12      | 73±2                   | 85  | 305 | 290 | 5,000    |
| MFR0S4                                  | MF-25-S    | 73±2                   | 85  | 305 | 290 | 5,000    |
| MFR0W4                                  | MF-25      | 73±2                   | 85  | 305 | 290 | 5,000    |
| MFR004                                  | MF-40-SS   | 73±2                   | 85  | 305 | 290 | 5,000    |
| MFR0U2                                  | MF-50-SS   | 73±2                   | 85  | 305 | 290 | 5,000    |
| MFR0S2                                  | MF-50-S    | 73±2                   | 85  | 305 | 290 | 4,000    |
| MFR0W2                                  | MF-50      | 73±2                   | 85  | 305 | 290 | 2,500    |
| MFR006                                  | MF-60-S    | 73±2                   | 85  | 305 | 290 | 5,000    |
| MFR01W                                  | MF-100     | 73±2                   | 85  | 305 | 290 | 2,500    |
| MFR02W                                  | MF-200     | 80±5                   | 95  | 295 | 290 | 1,000    |
| MFR03W                                  | MF-300     | 80±5                   | 105 | 300 | 290 | 1,000    |
| <b>Metal Oxide Film Fixed Resistors</b> |            |                        |     |     |     |          |
| MOR0W4                                  | MOR-25     | 73±2                   | 85  | 305 | 290 | 5,000    |
| MOR0S2                                  | MOR-50-S   | 73±2                   | 85  | 305 | 290 | 5,000    |
| MOR0W2                                  | MOR-50     | 73±2                   | 85  | 305 | 290 | 2,500    |
| MOR01S                                  | MOR-100-S  | 73±2                   | 85  | 305 | 290 | 2,500    |
| MOR01W                                  | MOR-100    | 73±2                   | 85  | 305 | 290 | 2,500    |
| MOR02S                                  | MOR-200-S  | 73±2                   | 85  | 305 | 290 | 2,500    |
| MOR02W                                  | MOR-200    | 80±5                   | 95  | 295 | 290 | 1,000    |
| MOR03S                                  | MOR-300-S  | 80±5                   | 95  | 295 | 290 | 1,000    |
| MOR03W                                  | MOR-300    | 80±5                   | 105 | 300 | 290 | 1,000    |
| MOR05U                                  | MOR-500-SS | 80±5                   | 105 | 300 | 290 | 1,000    |

**Resistor Network-SIP Series**
**Standard Packing of Resistor Network**


| No. of Pins | Weight Of 1,000ocs | Qty. Per Bag | Qty. Per Box | Qty Per. Carton |
|-------------|--------------------|--------------|--------------|-----------------|
| 4           | 210g               | 500          | 5.000        | 75.000          |
| 5           | 250g               | 400          | 4.000        | 60.000          |
| 6           | 320g               | 300          | 3.000        | 45.000          |
| 7           | 360g               | 200          | 2.000        | 30.000          |
| 8           | 430g               | 200          | 2.000        | 30.000          |
| 9           | 450g               | 200          | 2.000        | 30.000          |
| 10          | 530g               | 150          | 1.500        | 22.500          |
| 11          | 600g               | 100          | 1.000        | 15.000          |
| 12          | 650g               | 100          | 1.000        | 15.000          |
| 13          | 710g               | 100          | 1.000        | 15.000          |
| 14          | 770g               | 100          | 1.000        | 15.000          |

Standard Carton dimension (mm): 395/367>195