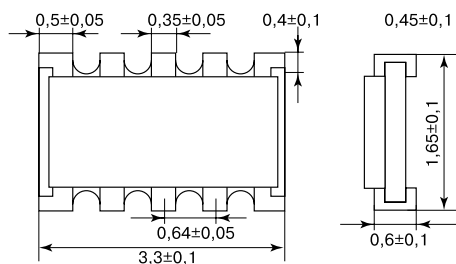


Thick Film Chip Resistor Network

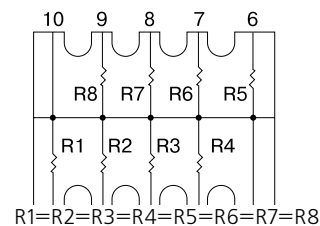
Features

- High density, 8 Resistors in one SMD case
- Improvement of placement efficiency
- Tape / Reel packaging is suitable for automatic placement machines
- Superior solderability

RT168P (10Pin 8R) Dimension (mm)



Equivalent Circuit Diagram



Type	RT168O (8 Resistors in 10 terminals)
Rated power at 70 °C	1/32W (special code "WH" in Part No.)
Max. working voltage	25 V
Max. Overload voltage	50 V
Dielectric withstanding voltage	50 V
Operating temperature range	-55°C ~ +125°C
Resistance Range	5% (E-24 series); 33Ω ~ 100KΩ

Performance Specification

Temperature coefficient	±200PPM °C
Short time overload	±(2.0% +0.05Ω) Max.
Insulation resistance	≥ 1,000Mega Ohm.
Dielectric withstanding voltage	No evidence of flashover, mechanical damage, arcing or insulation breakdown
Terminal bending	±(1.0% +0.05Ω) Max.
Soldering heat	Resistance change rate is ±(1.0% +0.05Ω) Max
Solderability	Min. 95% coverage
Load life in humidity	±(3.0% +0.1Ω) Max.
Load life	±(3.0% +0.1Ω) Max.